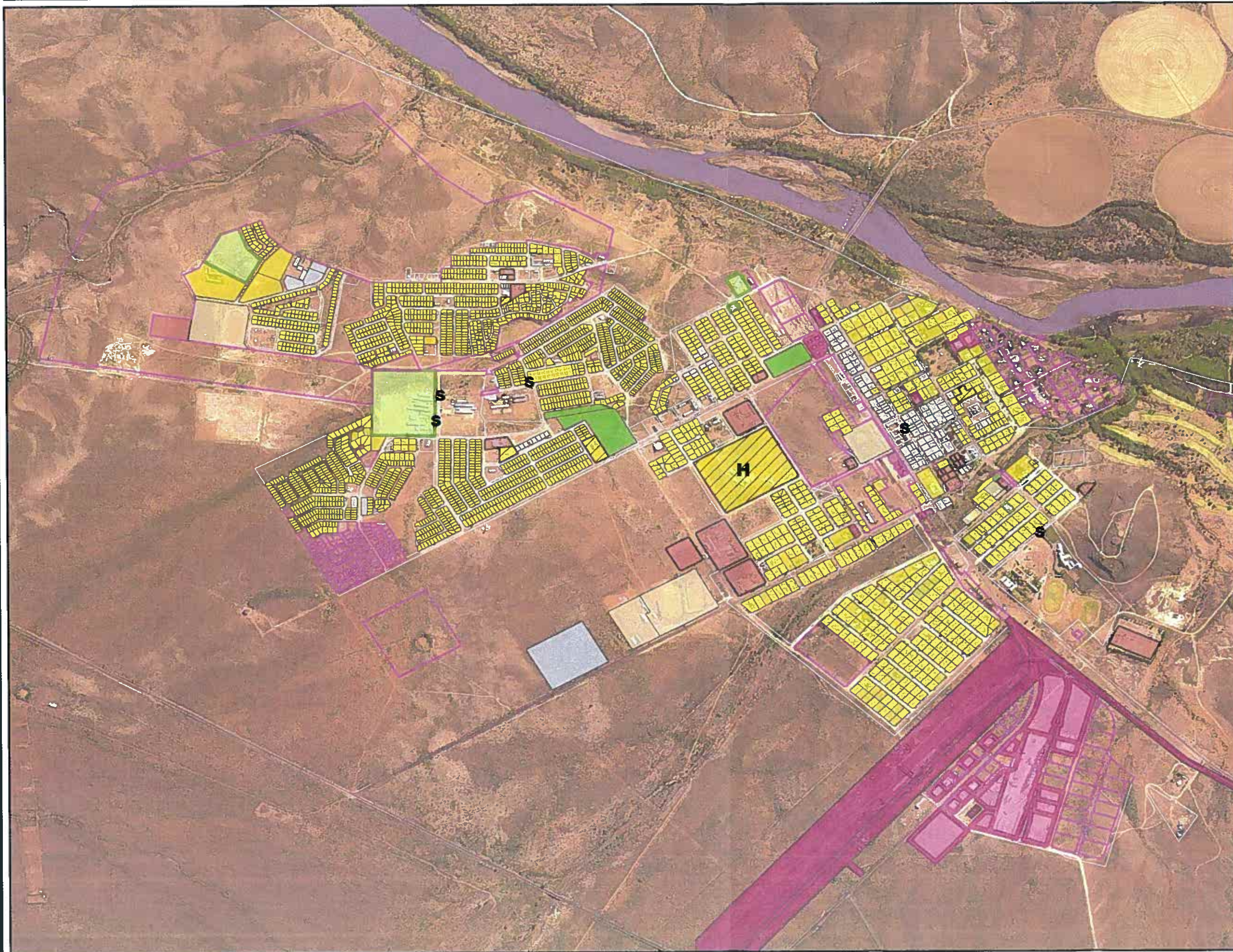










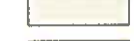

LANDUSE MAP - PRIESKA



LEGEND

- S** Schools
- +** Clinics
- H** Hospitals

LANDUSE

-  Business
-  Commercial
-  Educational
-  Government
-  Industrial
-  Institutional
-  Public
-  Recreational
-  Residential
-  Unknown

Locality Map



0 150 300 600 Kilometers



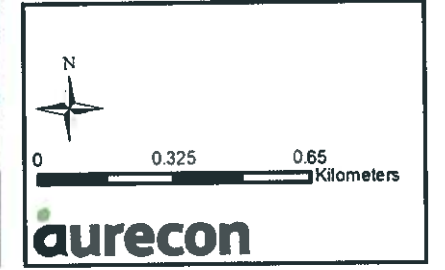
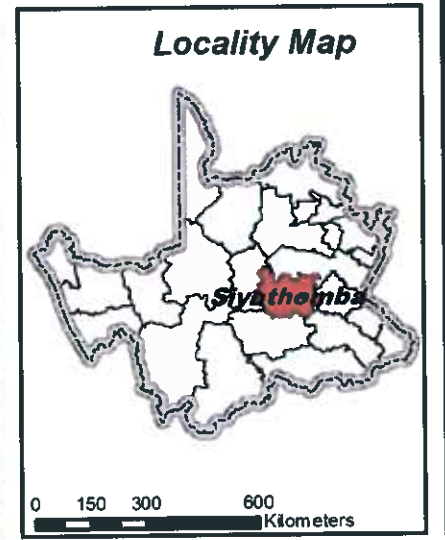
0 0.3 0.6 Kilometers

aurecon

WATER - PRIESKA



- LEGEND**
- House Connection
 - Yard Connection
 - Communal Standpipe
 - Communal >200m
 - None
 - Unknown
 - Water treatment
 - Bulk Supply
 - Connector
 - Reticulation
 - Unknown
 - Reservoir
 - Pump
 - Bulk water meter
 - Surface water
 - Borehole
 - Communal Standpipe
 - Schools
 - Clinics
 - Hospitals



SANITATION - PRIESKA



LEGEND

- S** Schools
- +** Clinics
- H** Hospitals
- Gravity
- Outfall Sewer
- Pumped
- Rising Main
- Unknown

LEVEL OF SERVICE

Basic Service

- Flush to treatment
- Conservancy Tank
- Septic Tank
- UDS
- VIP

Inadequate facilities

- Unimproved Pit
- Bucket
- None
- Unknown
- ▲ Treatment plant
- Sewer pump

Locality Map



0 150 300 600 Kilometers



aurecon

Prieska Electricity Network



Legend

- High Mast Lighting
- Mini Substation
- MV Substation
- Underground Cables
- Overhead Lines
- ▭ Erf boundaries





Scale : 1:24 000



Legend

Classes

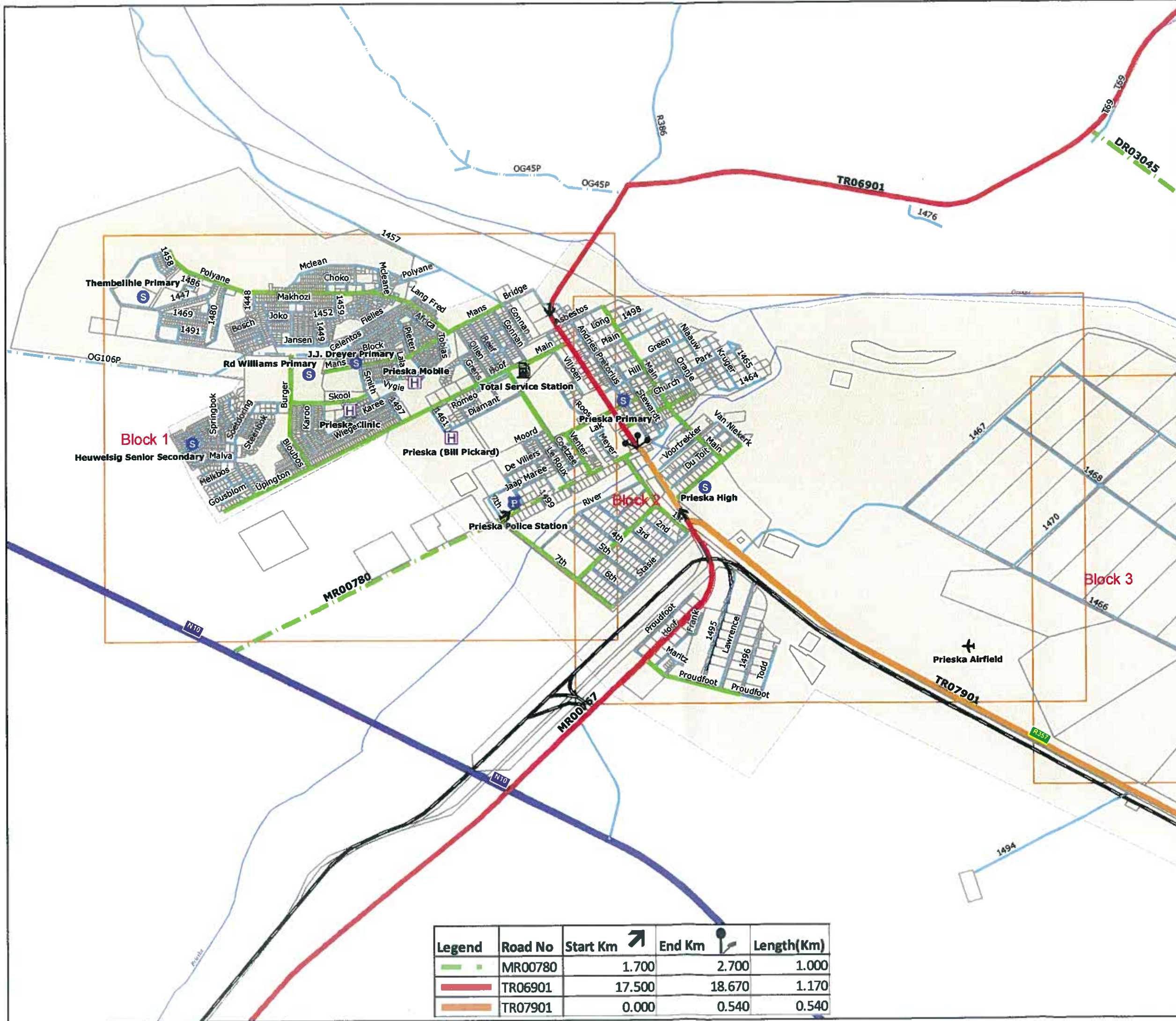
- 1 (Blue line)
- 2 (Orange line)
- 3 (Red line)
- 4A (Green line)
- 4B (Dashed Green line)
- 5A (Light Blue line)
- 5C (Dashed Light Blue line)
- 5B (Black line)



Vela VKE Consulting Engineers

6 Rush Street, Albertynshof 8301, Kimberley or P O Box 110715, Hudson Park 8306, Kimberley, South Africa
 Tel: +27(0)53 832 5150 / Fax: +27(0)53 832 5639
 e-mail: kimberley@velavke.co.za, Website: www.velavke.co.za

Date: 2011-09-15
 File Name: A3_Pixley ka Seme_Prieska 1

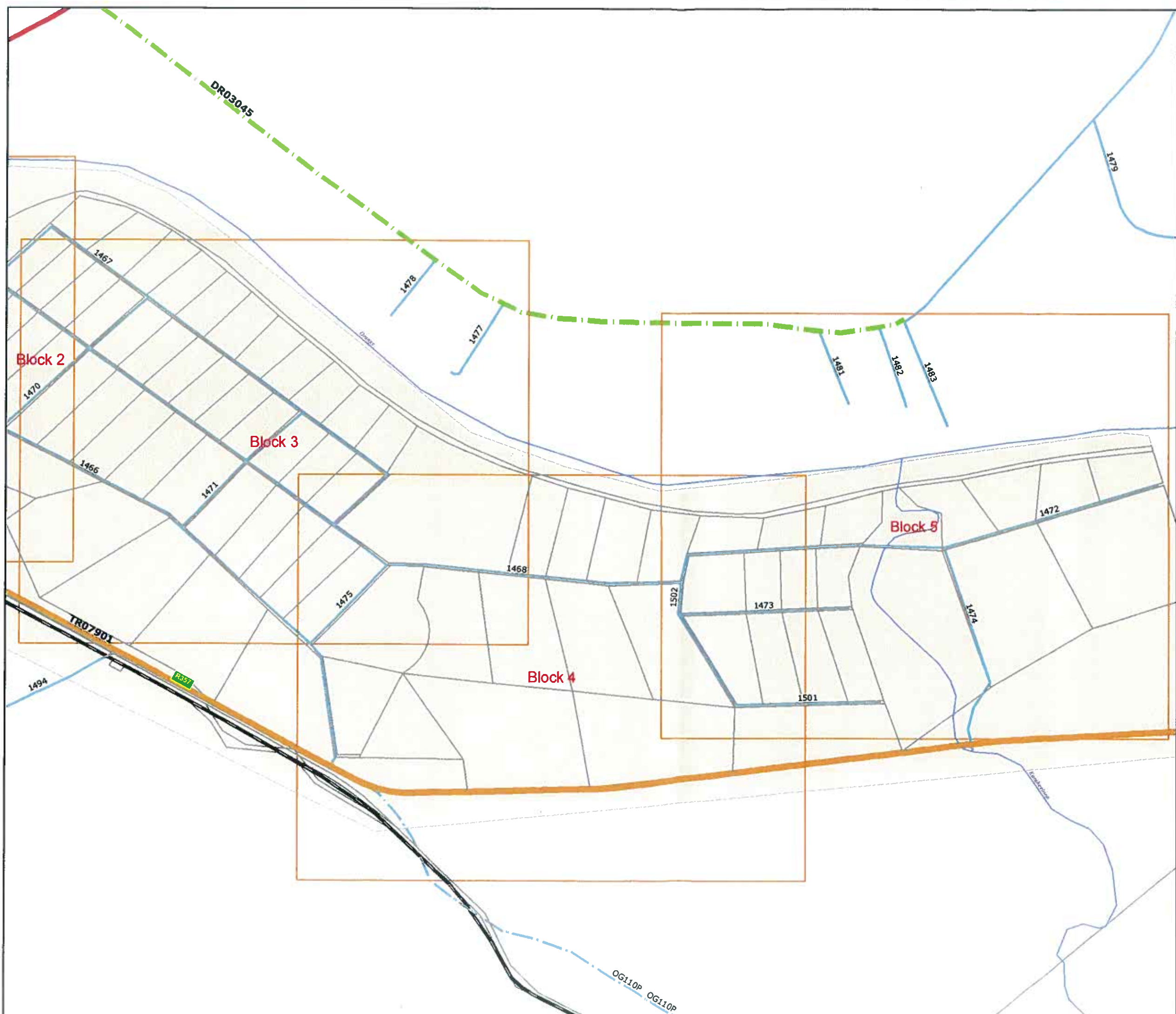


Legend	Road No	Start Km	End Km	Length(Km)
	MR00780	1.700	2.700	1.000
	TR06901	17.500	18.670	1.170
	TR07901	0.000	0.540	0.540

PRIESKA 2 OF 2
 Northern Cape Province
 Pixley ka Seme District Municipality
 Siyathemba Local Municipality



Scale : 1:24 000
 0.5 0.25 0 0.5 Km



Legend

- Classes**
- 1
 - 2
 - 3
 - 4A
 - 4B
 - 5A
 - 5C
 - 5B



Vela VKE Consulting Engineers
 6 Rush Street, Albertynshof 8301, Kimberley or P O Box 110715, Hudson Park 8308, Kimberley, South Africa
 Tel +27(0)53 832 5150 / Fax +27(0)53 832 5639
 e-mail: kimberley@velavke.co.za, Website: www.velavke.co.za
 Date: 2011-09-15
 File Name: A3_Pixley ka Seme_Prieska 2

PRIESKA - BLOCK 1 OF 5
 Northern Cape Province
 Pixley ka Seme District Municipality
 Siyathemba Local Municipality



Scale : 1:10 500
 0.25 0.125 0 0.25 Km

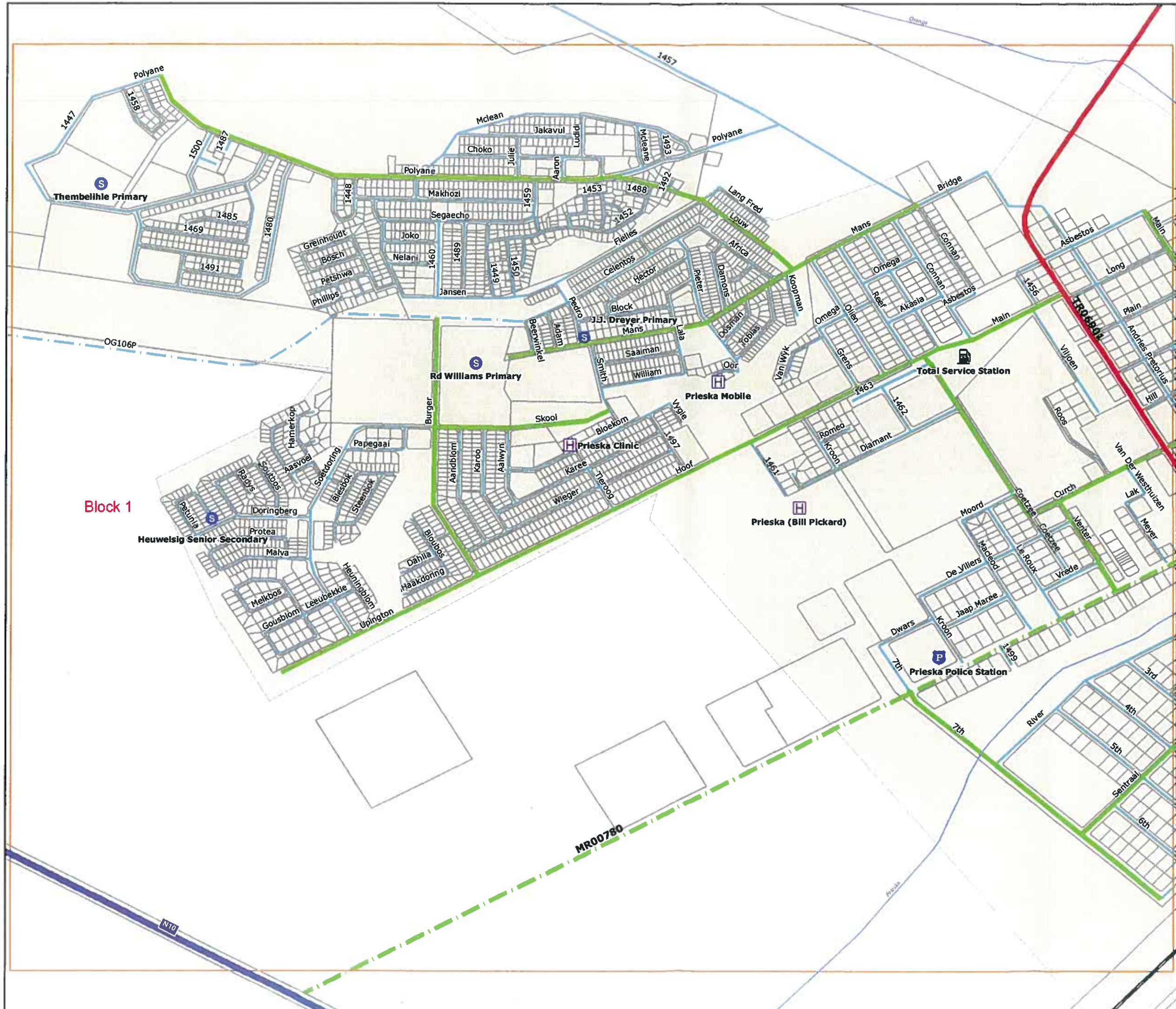


Legend

- Classes**
- 1 (Blue line)
 - 2 (Orange line)
 - 3 (Red line)
 - 4A (Green line)
 - 4B (Dashed green line)
 - 5A (Light blue line)
 - 5C (Dashed light blue line)
 - 5B (Black line)



Vela VKE Consulting Engineers
 6 Rush Street, Albertynshof 8301, Kimberley or P O Box 110715, Hudson Park 8308, Kimberley, South Africa
 Tel +27(0)53 832 5150 / Fax +27(0)53 832 5839
 e-mail: Kimberley@velavke.co.za, Website: www.velavke.co.za
 Date: 2011-09-15
 File Name: A3_Pixley ka Seme_Prieska_B1



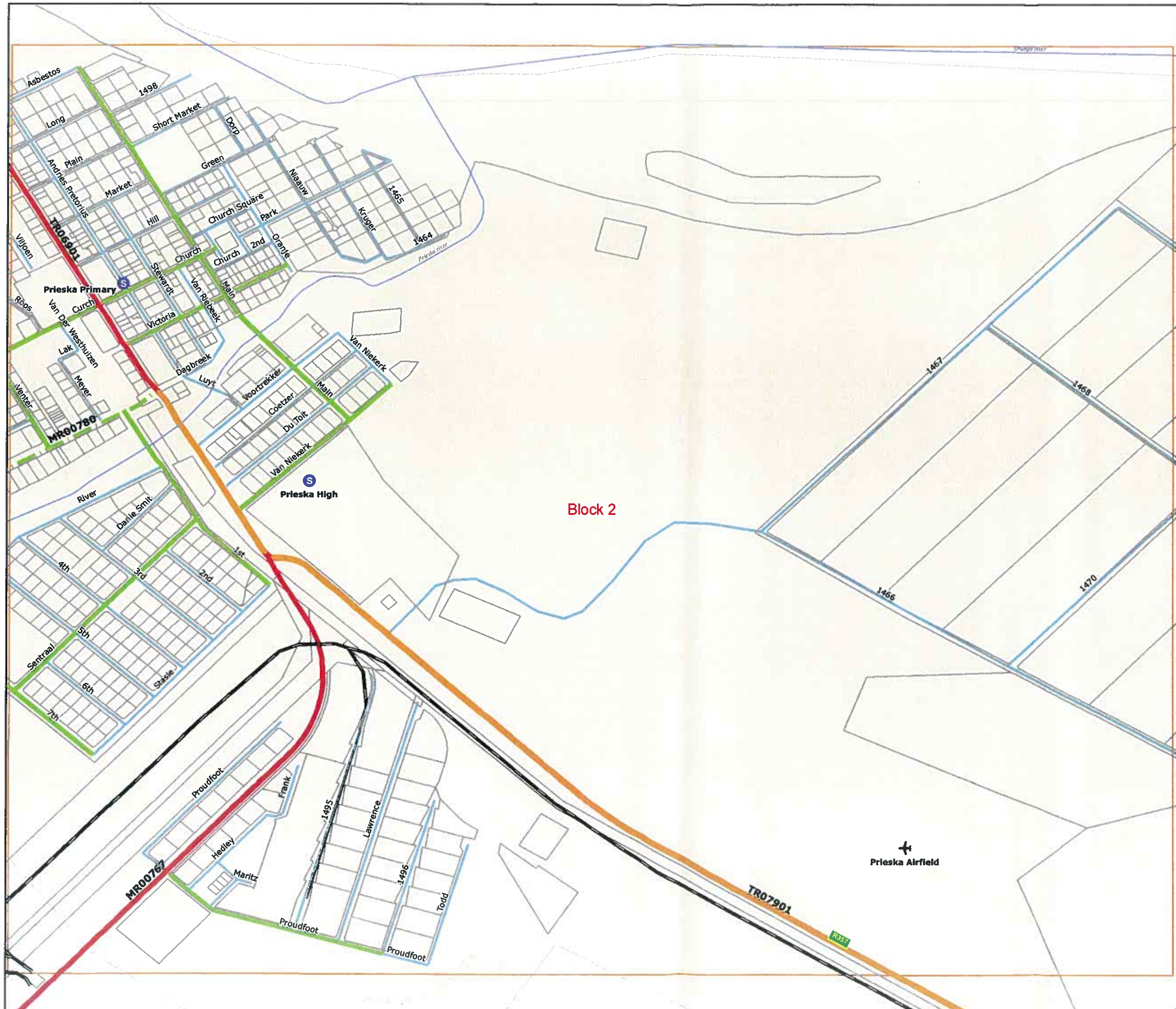
Block 1

MR00780

PRIESKA - BLOCK 2 OF 5
 Northern Cape Province
 Pixley ka Seme District Municipality
 Siyathemba Local Municipality



Scale : 1:10 500
 0.25 0.125 0 0.25 Km



Legend

- Classes**
- 1
 - 2
 - 3
 - 4A
 - 4B
 - 5A
 - 5C
 - 5B



Vela VKE Consulting Engineers
 6 Rush Street, Albertshof 8301, Kimberley or P O Box 110715, Hudson Park 8306, Kimberley, South Africa
 Tel: +27(0)53 832 5150 / Fax +27(0)53 832 5639
 e-mail: kimberley@velavke.co.za, Website: www.velavke.co.za
 Date: 2011-09-15
 File Name: A3_Pixley ka Seme_Prieska_B2

PRIESKA – BLOCK 3 OF 5
 Northern Cape Province
 Pixley ka Seme District Municipality
 Siyathemba Local Municipality



Scale : 1:10 500



Block 3

Legend

Classes

- 1 (Blue line)
- 2 (Orange line)
- 3 (Red line)
- 4A (Green dashed line)
- 4B (Green dash-dot line)
- 5A (Blue solid line)
- 5C (Blue dashed line)
- 5B (Black solid line)



Vela VKE Consulting Engineers
 6 Ruth Street, Albertynshof 8301, Kimberley or P O Box
 110715, Hudson Park 8308, Kimberley, South Africa
 Tel +27(0)53 832 5150 / Fax +27(0)53 832 5839
 e-mail: kimberley@velavke.co.za, Website: www.velavke.co.za

Date: 2011-09-15
 File Name: A3_Pixley ka Seme_Prieska_B3

PRIESKA – BLOCK 4 OF 5
 Northern Cape Province
 Pixley ka Seme District Municipality
 Siyathemba Local Municipality



Scale : 1:10 500



Block 4

Legend

Classes

- 1
- 2
- 3
- 4A
- 4B
- 5A
- 5C
- 5B



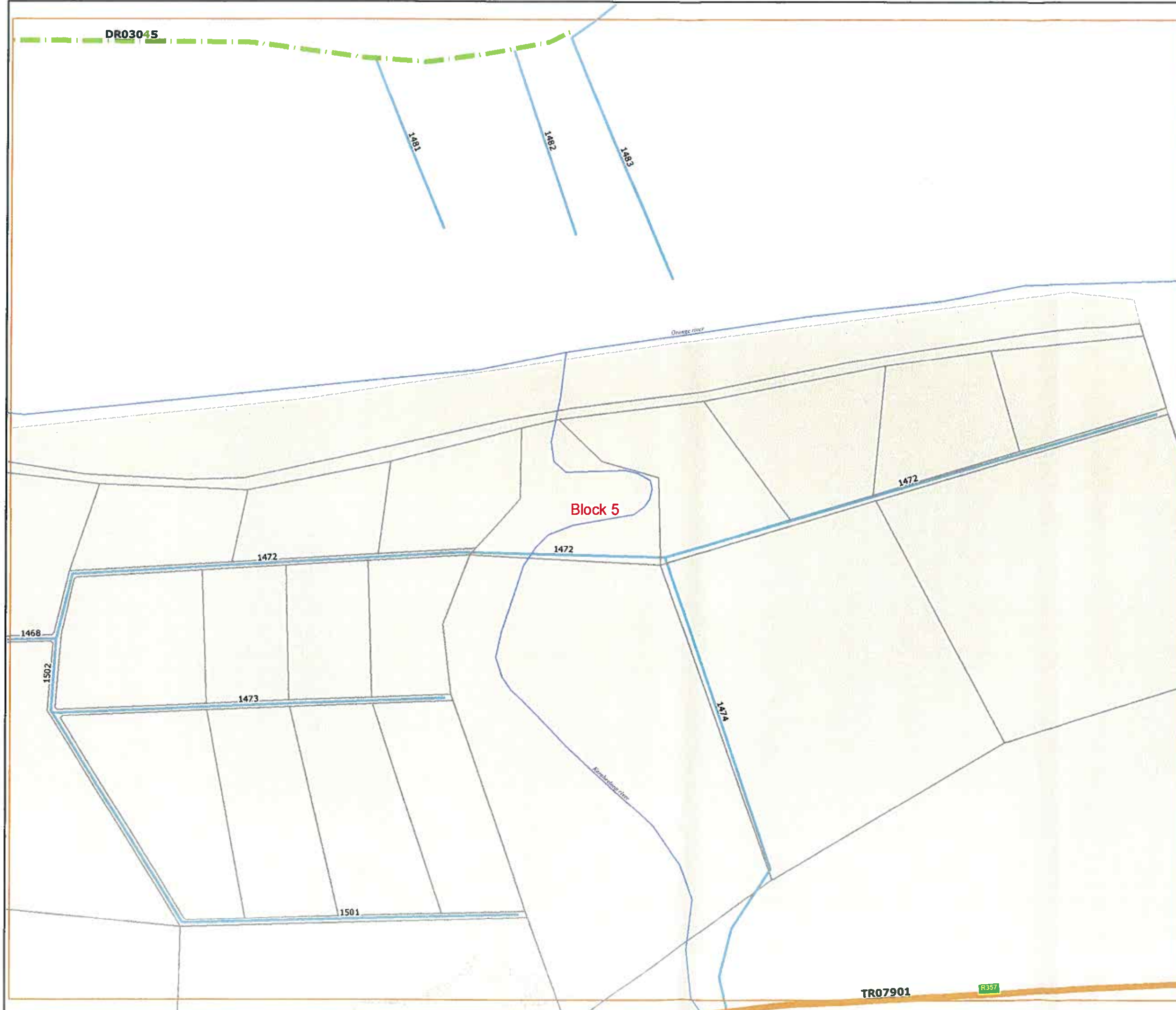
Vela VKE Consulting Engineers
 6 Rush Street, Albertynshof 8301, Kimberley or P O Box
 110715, Hadison Park 8306, Kimberley, South Africa
 Tel +27(0)53 832 5150 / Fax +27(0)53 832 5639
 e-mail: kimberley@velavke.co.za, Website: www.velavke.co.za

Date: 2011-09-15
 File Name: A3_Pixley ka Seme_Prieska_B4

PRIESKA - BLOCK 5 OF 5
 Northern Cape Province
 Pixley ka Seme District Municipality
 Siyathemba Local Municipality



Scale : 1:10 500



Legend

Classes

- 1 (Blue line)
- 2 (Orange line)
- 3 (Red line)
- 4A (Green line)
- 4B (Green dashed line)
- 5A (Blue line)
- 5C (Blue dashed line)
- 5B (Black line)



Vela VKE Consulting Engineers

6 Rush Street, Albertynshof 8301, Kimberley or P O Box 110715, Hudson Park 8306, Kimberley, South Africa
 Tel +27(0)53 832 5150 / Fax +27(0)53 832 5839
 e-mail: kimberley@velavke.co.za, Website: www.velavke.co.za

TR07901

R357

Date: 2011-09-15
 File Name: A3_Pixley ka Seme_Prieska_B5